

## Case Study

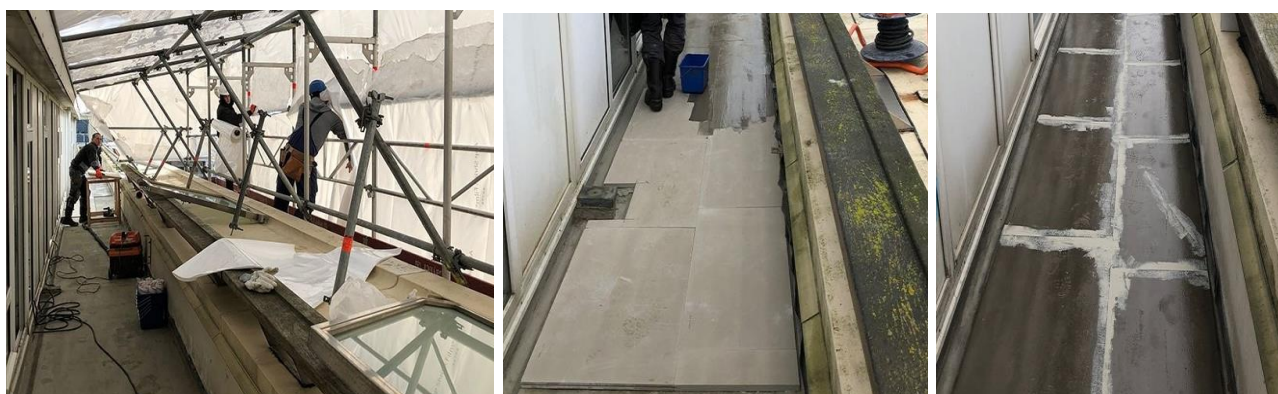
Project/customer name:	Grand Hotel Amrâth Kurhaus
Year of application:	2018
Location/country:	Scheveningen / The Netherlands
Building type:	Hotel
Authorized contractor:	Tissink Specialistische Afdichtingen BV
Additional project details:	Create a first-class appearance very fast and at the same time ensure that the balconies and walkways are safe

General view:



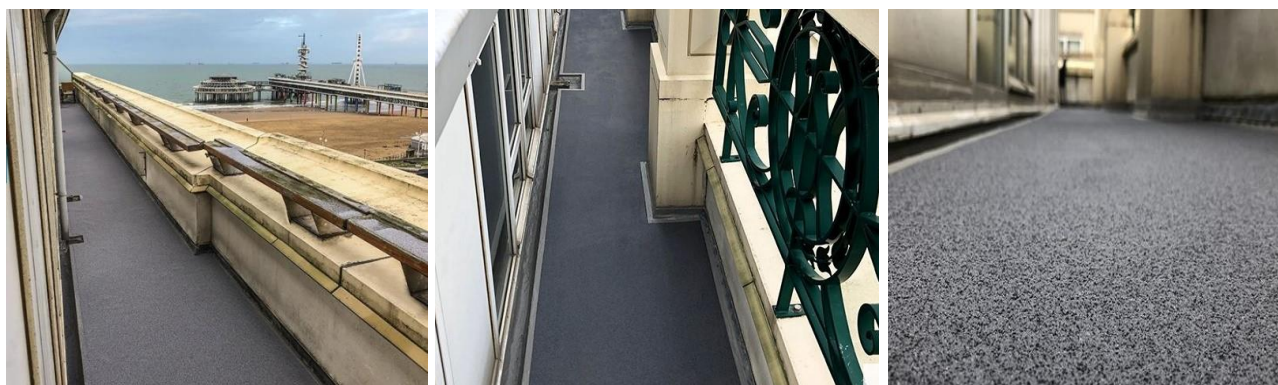
## Challenge:

- The balconies and walkways are located on the top floor of the hotel and therefore also serve as a roof for the underlying occupied spaces.
- Their existing membrane had reached the end of its life, especially at the details where it was split and delaminated. Additionally, the aesthetic appearance was not to the standard that the Hotel likes to provide to its clients.
- The walkway finish had also become worn with the anti-slip properties deteriorating so much in places that it was smooth, bringing a extreme risk of slipping. The challenge was clear, create a first-class appearance very fast and at the same time ensure that the balconies and walkways are safe for all to use.



## Solution:

- The Triflex ProTerra Buried system utilizing Aquapanel cement boards was chosen. The system is also fire-retardant and would only produce low smoke in the event of fire.
- To match the appearance of the finished surface with the aesthetic of the Kurhaus, the system was installed with a Quartz Design finish in gray. Quartz Design provides an exceptionally high anti-skid property, providing a safe surface for the guests to traffic even in wet weather.
- Because it was a large hotel which had to remain operational and occupied, the works had to be completed quickly. Triflex systems provide ultra-rapid curing times, being ready to be over-coated with subsequent layers or trafficked in as little as one hour.



## Products used at a glance:

Triflex offers liquid PMMA\* based resins (e.g. ProDetail for details or ProTect for areas):

1. Substrate
2. Primer, if necessary
3. Waterproofing layers
  - a) Triflex ProDetail (2kg / sqm)
  - b) Triflex Special Fleece
  - c) Triflex ProDetail (1 kg / sqm)
4. Finish, if wanted

\* Polymethyl methacrylate



**Continually improved over 40 years in order to become the market leader in Europe.**



## Main benefits (European Guideline ETAG 005):

- 25 years estimated working life performance
- Fast curing time and rainproof after only 30 minutes
- Application possible till humidity of 99% and withstands surface temperature after application up to 90° C
- A liquid seamless solution that fits to any structure with complex geometry
- Adherence to any surfaces (Aluminum, steel, plastic, glass, bitumen, concrete, ...)
- Solvent free, environmental friendly and with no risk to health
- High resistance to chemicals, roots and rhizome, alkali and hydrolysis
- Cold application with no flame and flame retardant
- Highly UV resistant (1000 MJ/m<sup>2</sup> = 325 days)
- Easy to impose loads after application (for particular demands as green roofs)