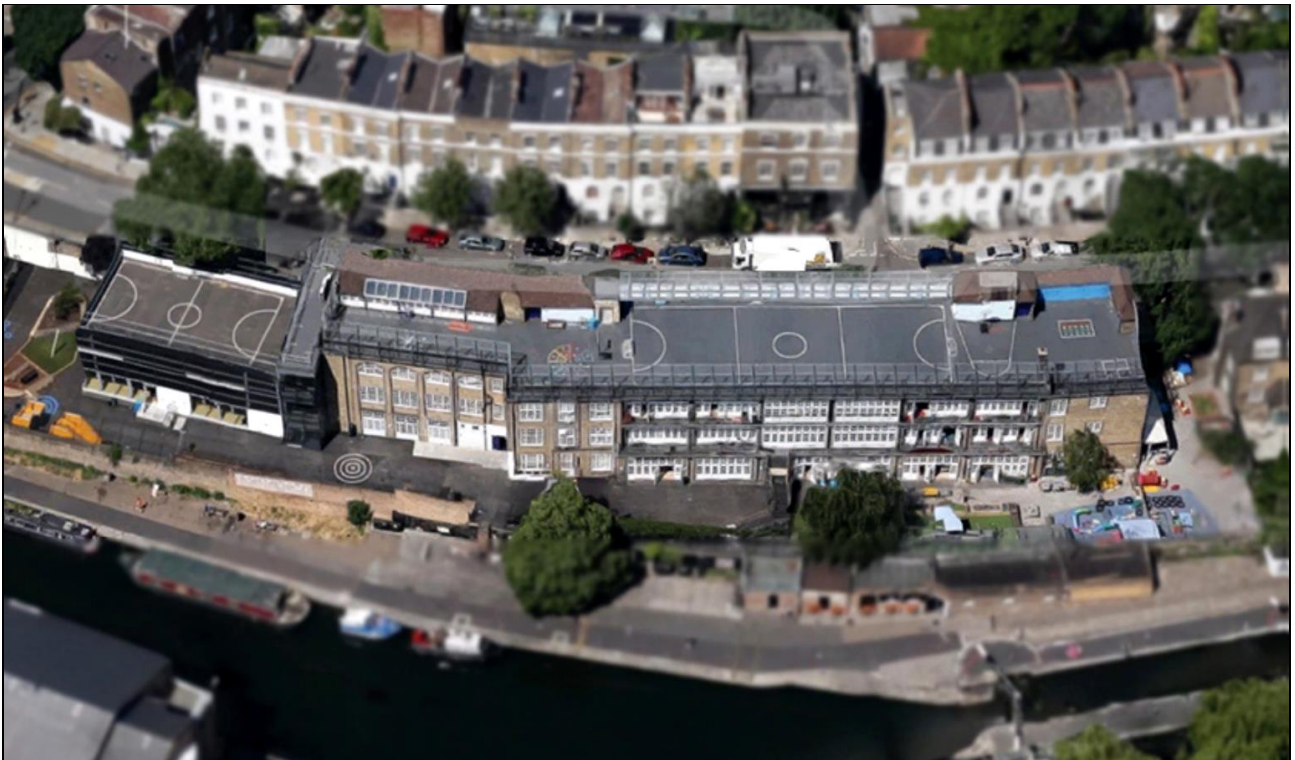


Case Study

Project/customer name:	Hanover Primary School
Year of application:	n/n
Location/country:	London / UK
Building type:	School
Authorized contractor:	n/n
Additional project details:	Robust waterproofing and surfacing on roof top play ground

General view:



Challenge:

- The playground area was showing signs of significant deterioration and in certain areas the safety of the play area had become a concern.
- The existing membrane should not be removed.



Solution:

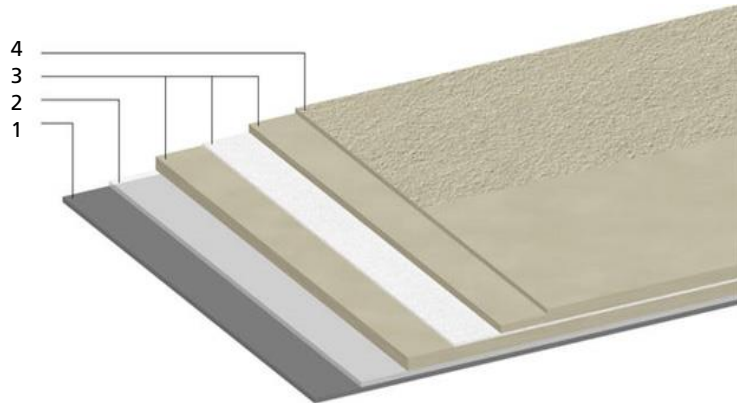
- Due to its rapid cure times and its ability to overlay almost all existing substrates, Triflex BTS-P was specified for the project.
- Once the asphalt substrate had been prepared and existing playground markings removed, the Triflex BTS-P waterproofing and surfacing system was installed.
- Triflex Preco Cryl Rollplastik 2K was then used to provide new playground markings including a football pitch, basketball court and educational play markings.



Products used at a glance:

Triflex offers liquid PMMA* based resins (e.g. ProDetail for details or ProTect for areas):

1. Substrate
2. Primer, if necessary
3. Waterproofing layers
 - a) Triflex ProDetail (2kg / sqm)
 - b) Triflex Special Fleece
 - c) Triflex ProDetail (1 kg / sqm)
4. Finish, if wanted



* Polymethyl methacrylate

Continually improved over 40 years in order to become the market leader in Europe.



Main benefits (European Guideline ETAG 005):

- 25 years estimated working life performance
- Fast curing time and rainproof after only 30 minutes
- Application possible till humidity of 99% and withstands surface temperature after application up to 90° C
- A liquid seamless solution that fits to any structure with complex geometry
- Adherence to any surfaces (Aluminum, steel, plastic, glass, bitumen, concrete, ...)
- Solvent free, environmental friendly and with no risk to health
- High resistance to chemicals, roots and rhizome, alkali and hydrolysis
- Cold application with no flame and flame retardant
- Highly UV resistant (1000 MJ/m² = 325 days)
- Easy to impose loads after application (for particular demands as green roofs)