

Case Study

Project/customer name:	Withdean Close
Year of application:	2017
Location/country:	Brighton / UK
Building type:	Private House
Authorized contractor:	Sussex Roofing and Building Services Ltd.
Additional project details:	Waterproofing a terrace

General view:



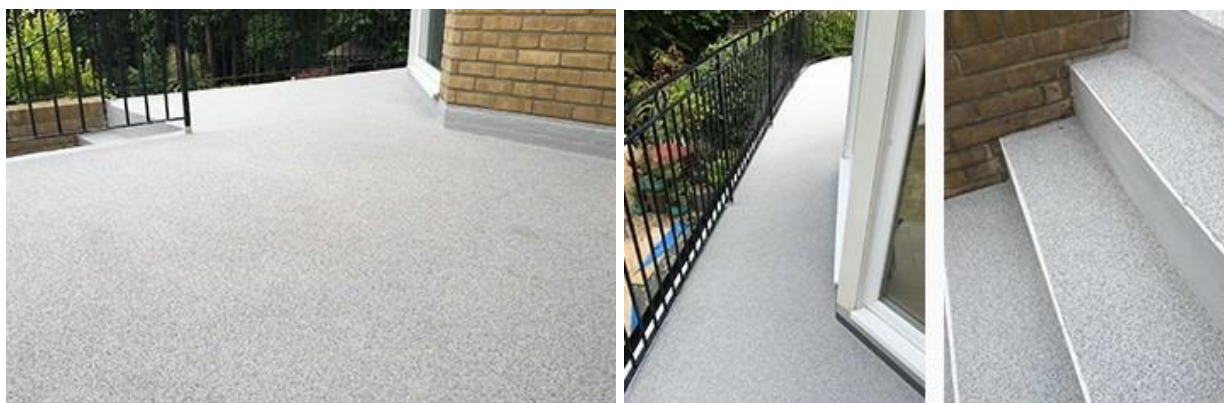
Challenge:

- A homeowner was suffering from water ingress that had stopped him from utilizing habitable space under the terrace. Due to the constant dampness of the terrace, algae and moss had developed over the winter months, making the areas very slippery.
- The terrace perimeter guttering had been incorrectly installed which created a back fall onto the existing brickwork. This meant that the terrace was constantly saturated and vegetation growth was rife.
- The existing substrates included a block and beam deck with a sand and cement screed. The finished build-up consisted of 32mm Indian sandstone slabs, bedding mortar and a damp proof membrane which had failed.



Solution:

- Triflex ProTerra (BTS-P) was specified to be the best solution, as it has excellent adhesion to all existing substrates and providing surface finishes with over 70 color choices.
- The existing system was completely removed and a poly modified laid to falls screed was applied to the substrate. This was used due to the reduced amount of water required in comparison to a standard sand and cement screed, allowing for a reduced overlay time for the Triflex system.
- Lastly the Triflex ProTerra solution meant that any future issues with standing or ponding water would be no cause for concern as this system is hydrolysis resistant, meaning it is not affected by submersion under water.

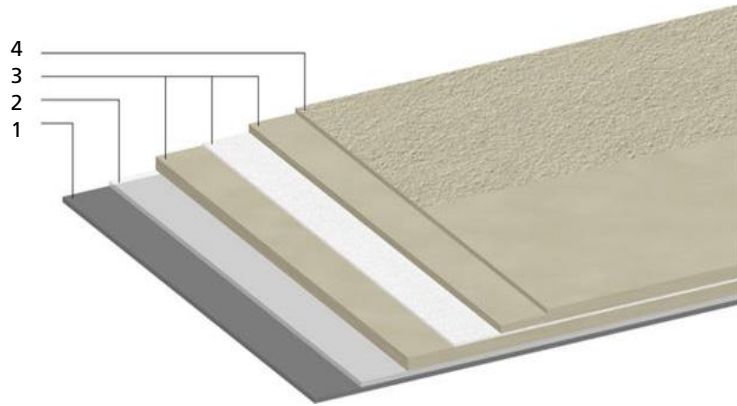


Products used at a glance:

Triflex offers liquid PMMA* based resins (e.g. ProDetail for details or ProTect for areas):

1. Substrate
2. Primer, if necessary
3. Waterproofing layers
 - a) Triflex ProDetail (2kg / sqm)
 - b) Triflex Special Fleece
 - c) Triflex ProDetail (1 kg / sqm)
4. Finish, if wanted

* Polymethyl methacrylate



Continually improved over 40 years in order to become the market leader in Europe.



Main benefits (European Guideline ETAG 005):

- 25 years estimated working life performance
- Fast curing time and rainproof after only 30 minutes
- Application possible till humidity of 99% and withstands surface temperature after application up to 90° C
- A liquid seamless solution that fits to any structure with complex geometry
- Adherence to any surfaces (Aluminum, steel, plastic, glass, bitumen, concrete, ...)
- Solvent free, environmental friendly and with no risk to health
- High resistance to chemicals, roots and rhizome, alkali and hydrolysis
- Cold application with no flame and flame retardant
- Highly UV resistant (1000 MJ/m² = 325 days)
- Easy to impose loads after application (for particular demands as green roofs)